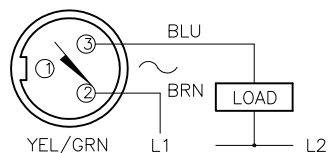


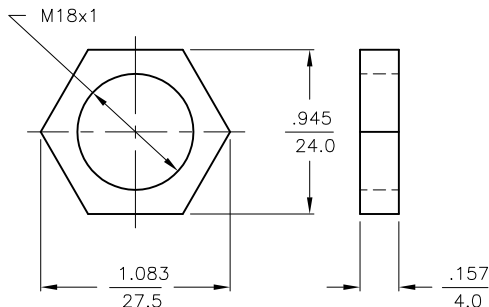
# WIRING DIAGRAMS



OUTPUT: AZ3X2

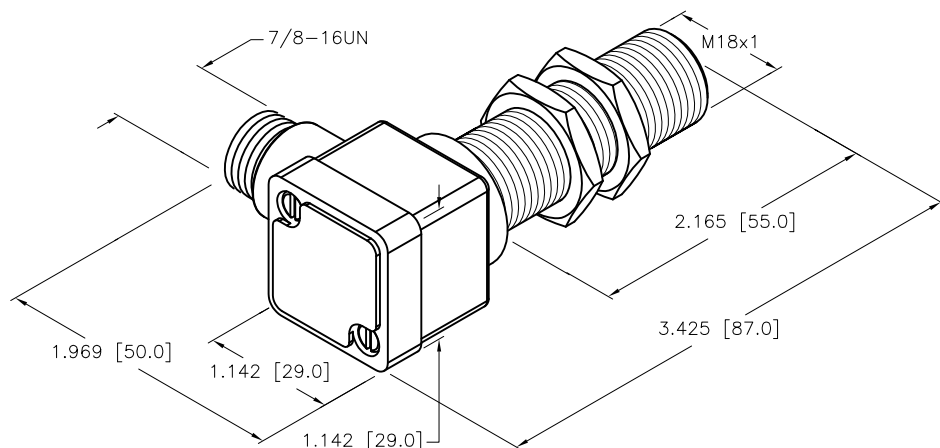
**WARNING: NO SHORT-CIRCUIT PROTECTION**  
ALWAYS WIRE A LOAD IN SERIES WITH THE SENSOR.

# LOCKNUT LN-M18



# SPECIFICATIONS

OPERATING VOLTAGE	20-250 VAC/DC
LINE FREQUENCY	40-60 Hz
DIFFERENTIAL TRAVEL (HYSTERESIS)	3-15% (5% TYPICAL)
VOLTAGE DROP ACROSS CONDUCTING SENSOR	≤7.0 V at 500 mA
OUTPUT FUNCTION -AZ	NORMALLY OPEN 2-WIRE AC SELF-CONTAINED
SHORT-CIRCUIT PROTECTED	NO
CONTINUOUS LOAD CURRENT	≤500 mA
OFF-STATE (LEAKAGE) CURRENT	≤1.7 mA
MINIMUM LOAD CURRENT	≥5.0 mA
INRUSH CURRENT	≤8.0 A (≤10 ms/5 Hz)
TIME DELAY BEFORE AVAILABILITY	≤25 ms
POWER-ON EFFECT PROTECTION	INCORPORATED
PROTECTION AGAINST TRANSIENTS	5 kV, 10 ms, 10 kΩ
OPERATING TEMPERATURE	-25°C to +70°C (-13°F to +158°F)
ENCLOSURE	MEETS NEMA 1, 3, 4, 6, 13 AND IEC IP67
SHOCK	30 g, 11 ms
VIBRATION	55 Hz, 1 mm AMPLITUDE (IN ALL 3 PLANES)
LED FUNCTION	GREEN: POWER ON RED: OUTPUT ENERGIZED
SENSING RANGE	5 mm = .197" (NOMINAL)
SWITCHING FREQUENCY	20 Hz
REPEATABILITY	RATED OPERATING DISTANCE
EMBEDDABLE (SHIELDED)	YES



SOURCE DRAWING - FOR REFERENCE ONLY

<b>RELATED DOCUMENTS</b> 1. 2. 3. 4.	<b>3RD ANGLE PROJECTION</b> 	THIS DRAWING IS CONFIDENTIAL AND THE PROPERTY OF TURCK INC. USE OF THIS DOCUMENT WITHOUT WRITTEN PERMISSION IS PROHIBITED.		<b>TURCK</b> 3000 CAMPUS DRIVE MINNEAPOLIS, MN 55441 1-800-544-7769 (763) 553-7300 (763) 553-0708 fax www.turck.us	
	<b>MATERIAL</b> BRASS BARREL	<b>DRFT</b> RDS <b>APVD</b>	<b>DATE</b> 06/24/08 <b>SCALE</b> 1=1.3	<b>DESCRIPTION</b> BI5-G18SK-AZ3X2-B1131 55MM	
<b>FINISH</b> COPPER, NICKEL, CHROME PLATING	ALL DIMENSIONS DISPLAYED ON THIS DRAWING ARE FOR REFERENCE ONLY  CONTACT TURCK FOR MORE INFORMATION	<b>UNIT OF MEASUREMENT</b> <b>INCH [ MILLIMETER ]</b>		<b>IDENTIFICATION NO.</b> 4331490	<b>REV</b> B
<b>B</b> UPDATE ID NUMBER PER HARMONIZATION PROJECT <b>REV</b> DESCRIPTION	<b>CBM</b> 11/06/17 <b>BY</b> <b>DATE</b> <b>ECO NO.</b>	DO NOT SCALE THIS DRAWING		<b>FILE:</b> 4331490	<b>SHEET</b> 1 OF 1